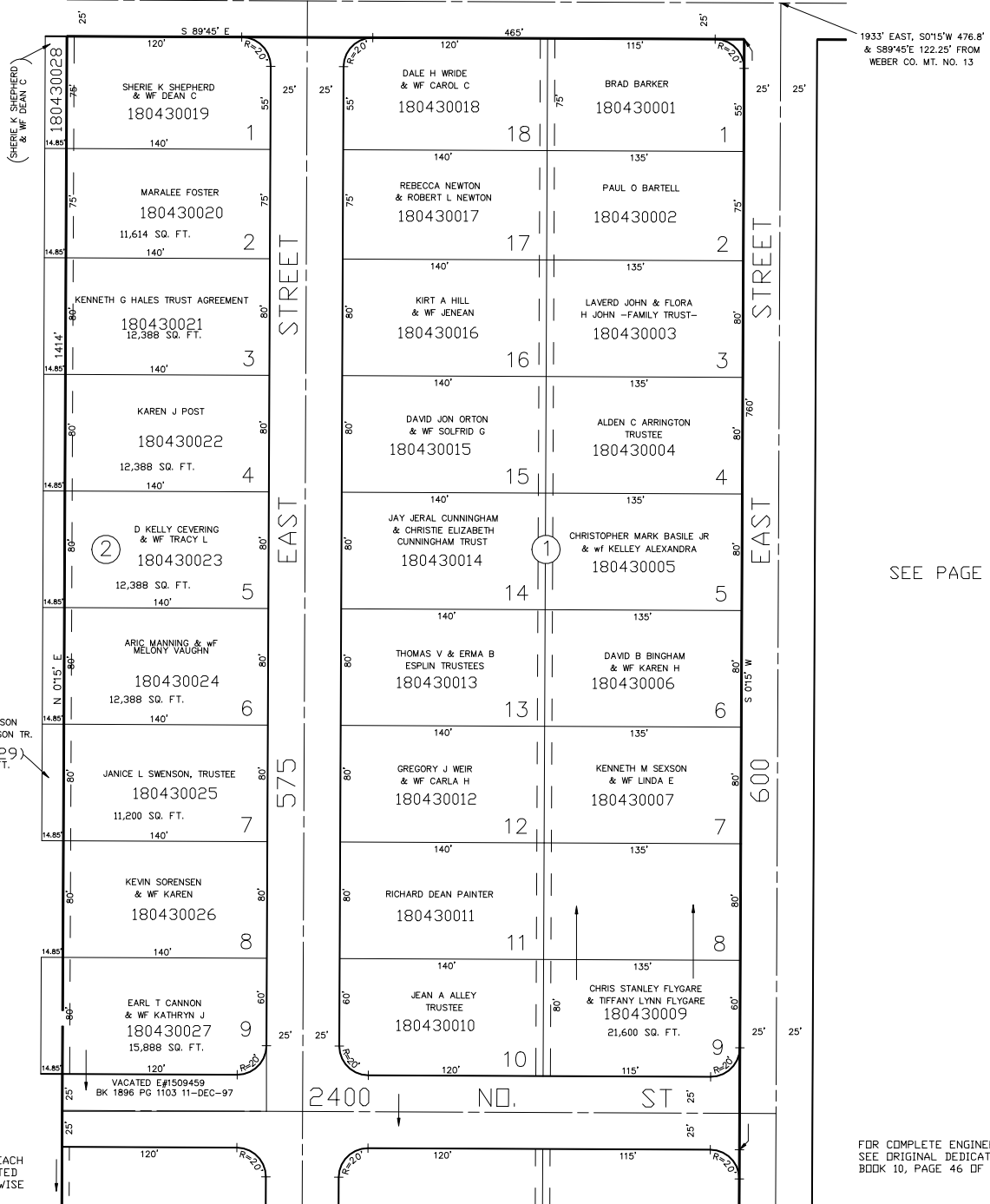


TAXING UNIT: 10

PART OF THE N.W. 1/4 OF SECTION 33, T.7N., R.1W., S.L.B. & M.  
**SIMMONS SUBDIVISION BLOCKS 1 & 2**  
 IN NORTH OGDEN CITY  
 SCALE 1" = 60'

SEE PAGE 42

2550 NORTH STREET



SEE PAGE 42

SEE PAGE 42

SEE PAGE 44